

# KENTUCKY COUNCIL ON POSTSECONDARY EDUCATION COMMITTEE ON EDUCATIONAL OPPORTUNITIES



January 26, 2026 – 3:00 p.m. ET  
Virtual meeting via ZOOM webinar

---

*\*Indicates action item*

- I. Call to Order**
- II. Roll Call**
- III. Approval of the Minutes\***
- IV. Welcome/CPE Updates**
- V. Kentucky Student Success Collaborative**
- VI. Student Basic Needs**
- VII. Adult Learners**
- VIII. Adjournment**

## MEETING MINUTES

*Draft for approved by the Committee on January 26, 2026*

---

Who: Kentucky Council on Postsecondary Education  
Meeting Type: Committee on Educational Opportunities  
Date: October 27, 2025  
Time: 1:00 p.m. ET  
Location: ZOOM Teleconference

### CALL TO ORDER

---

The Committee on Educational Opportunities (CEO) met Monday, October 27, 2025, at 1:00 p.m., ET. The meeting occurred by ZOOM teleconference. Chair Elaine Walker presided.

### ROLL CALL

---

There was a quorum of 6 voting committee members in attendance.

- Rev. CB Akins – attended
- Whitney Allen – attended
- Dr. Rochelle Brown – attended
- David Carpenter – attended
- Robert Croft – did not attend
- Dr. Kellie Ellis – attended
- Elaine Walker - attended

Dr. Dawn Offutt, Executive Director for Student Access, served as recorder of the meeting minutes.

### APPROVAL OF THE MINUTES

---

The minutes of the June 23, 2025, meeting were approved as distributed.

### WELCOME/CPE UPDATES

---

CPE President Aaron Thompson provided an update on his advocacy for the work of the Council, including the funding of the fifth GEAR UP Kentucky grant, amid national discussions of cutting funding for particular initiatives. He touted Kentucky's postsecondary accomplishments including our top ranking in retention, persistence, and graduation rates and debt load reduction. Dr. Thompson expressed concerned about changes in Pell grant status. He charged the Committee to use data not only to determine gains but also for outlining opportunities for growth among student populations.

## **STUDENTS WITH DISABILITIES AND POSTSECONDARY EDUCATION PRESENTATION**

---

Dr. Offutt reviewed survey results describing the experiences of K-12 practitioners who work with students with disabilities. Following the survey discussion, Kim Hinton, Coordinator of Due Process and Instruction at the Central Kentucky Educational Cooperative, provided insight into ways K-12 practitioners and postsecondary practitioners can partner to improve the transition of students with disabilities into postsecondary education.

## **GEAR UP KENTUCKY PRESENTATION**

---

Mr. Bruce Brooks, CPE Senior Fellow, gave a high-level overview of the newly awarded GEAR UP Kentucky grant. This serves as the fifth grant that the Council has received, and its initiatives focus on preparing students in middle and high school from school districts with a significant percentage of students from low income households for transition in to postsecondary education.

## **COMMITTEE UPDATES**

---

Dr. Offutt shared the passing of CEO member Dr. Luv'Tesha Robertson. Chair Walker presented a resolution to the Committee for approval.

MOTION: Mr. Carpenter moved the Committee approve the proposed resolution. Rev. Akins seconded the motion.

VOTE: The motion passed.

## **ADJOURNMENT**

---

The Committee adjourned at 2:10 p.m. ET.



# **The Kentucky Student Success Collaborative**

**CEO Meeting**

January 26, 2026



# Agenda

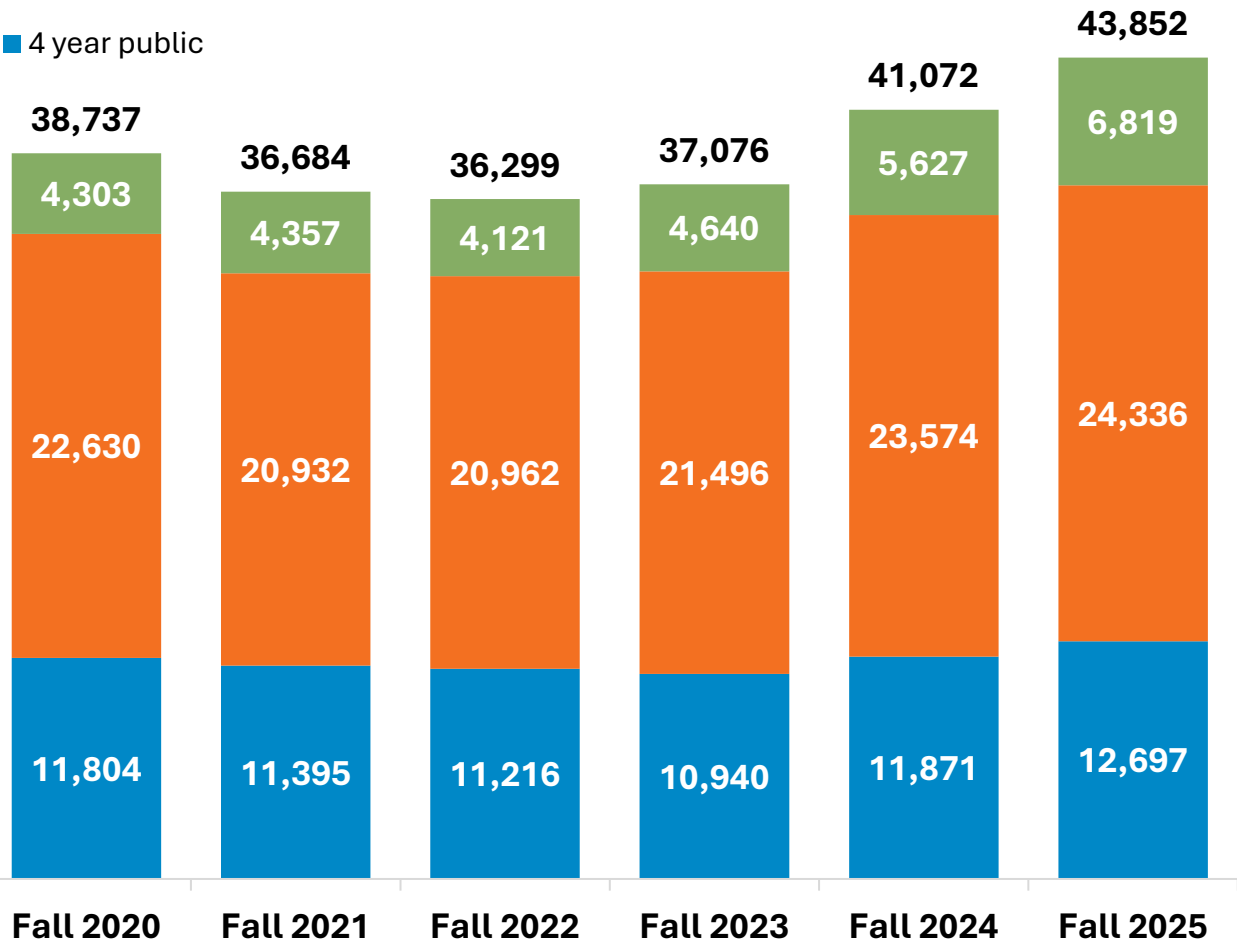
- Data on adult and low-income student enrollment and success.
- Overview of the KYSSC priorities and approach.
- Highlights of Student Basic Needs initiatives.
- Highlights of Adult Attainment initiatives.

# Data Overview

# Adult Undergraduate Enrollment Update (Fall 2025)

■ Private (AIKCU)  
■ KCTCS  
■ 4 year public

Total Adult Undergraduate Enrollment

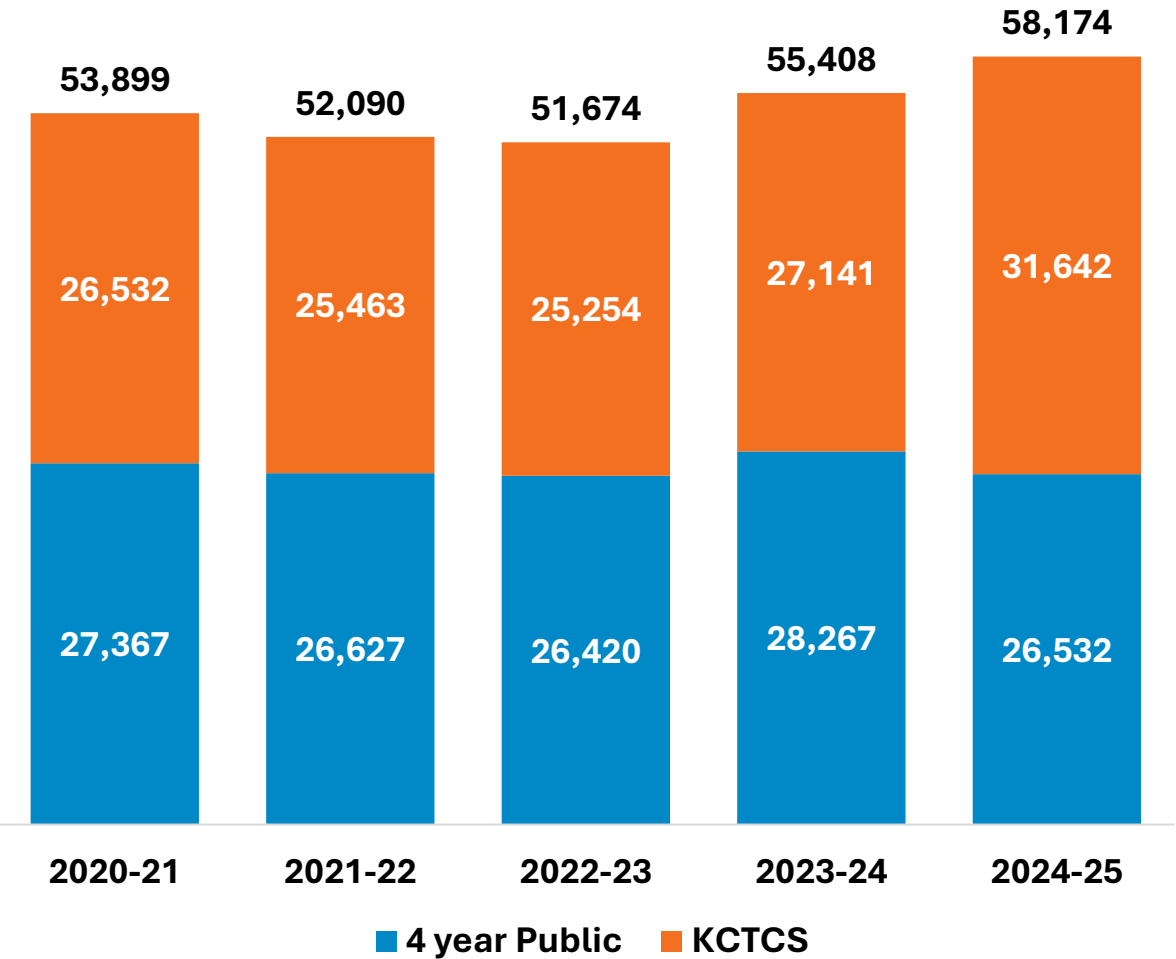


- **Total adult undergraduate enrollment:** 43,852
  - **+6.8%** from Fall 2024 to Fall 2025
  - **+13.2%** over the past five years (since Fall 2020)
- **First-time-in-college adult undergraduates:**
  - **+12.8%** from Fall 2024 to Fall 2025
  - **+80.7%** since Fall 2020
- **Low-income\* adult undergraduates:**
  - **+15.8%** from 2023–24 to 2024–25
  - **+12.1%** since 2019–20

\*CPE does not collect financial aid data (low-income status) from AIKCU institutic

# Low Income Undergraduate Update (Fall 2024)

Low Income Undergraduate Enrollment Trends



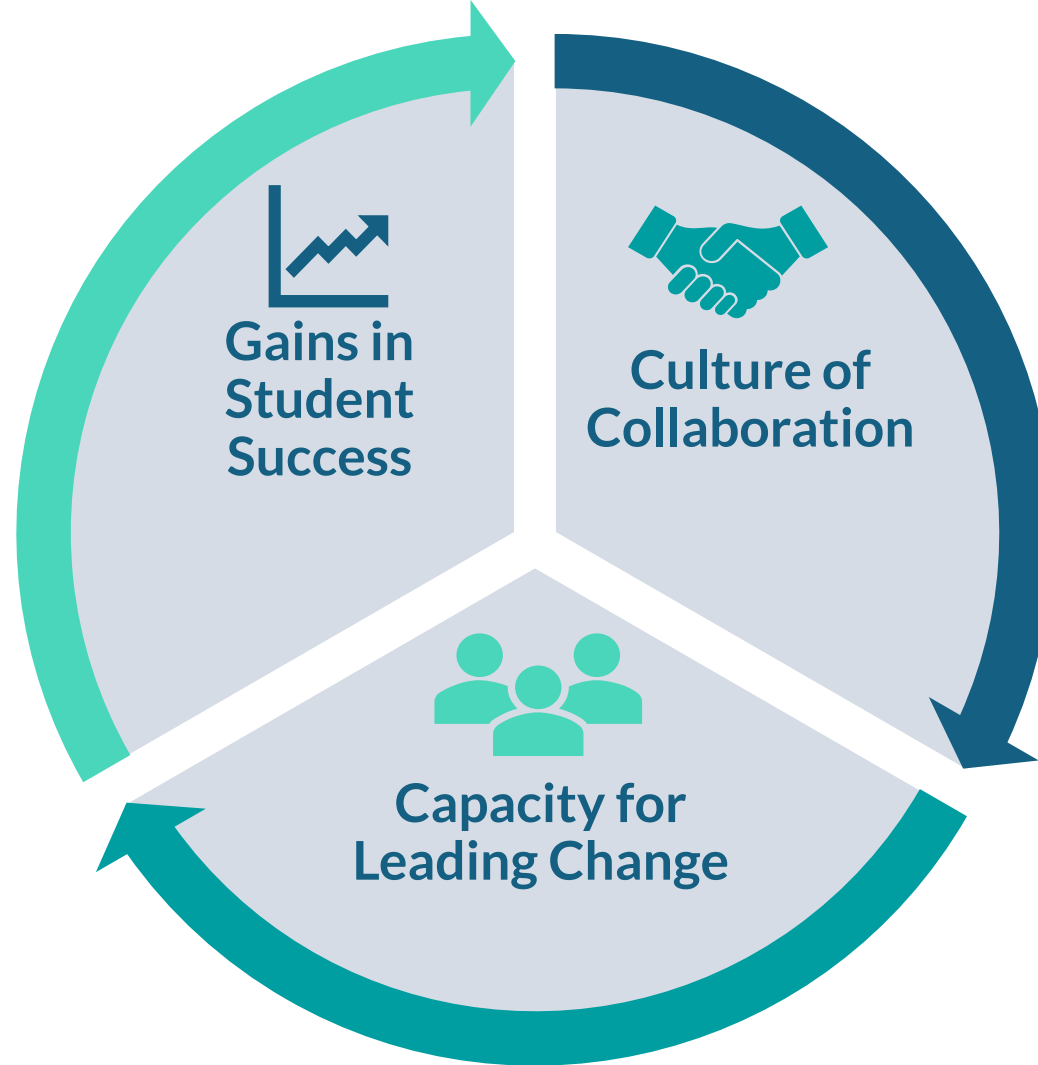
- **Low-income\* undergraduate enrollment:** 58,174
  - **+5.0%** from 2023–24 to 2024–25
  - **+7.9%** since 2020–21
- **Low-income Retention rates:**
  - Two-year public (KCTCS): **+1.8** percentage points year over year
  - Four-year public: **–0.8** percentage points year over year
- **Low-income Degrees and credentials awarded:** 35,227
  - **+9.4%** from 2023–24 to 2024–25
  - **+9.9%** since 2020–21
- **Low-income Graduation rates:**
  - Two-year public (KCTCS): **+2.3** percentage points year over year; **+11.0** points over five years
  - Four-year public: **+1.7** percentage points year over year; **+4.6** points over five years

\*CPE does not collect financial aid data (low-income status) from AIKCU institutions.



# KYSSC Priorities & Approach

# CPE Vision for KYSSC



# Kentucky's Student Success Framework

*Admissions Redesign*

*Transfer Pathways*

*Gateway Course Success*

*Student Basic Needs*

*Mental Health*

*Adult Attainment*





# Culture of Collaboration

# Infrastructure for Campus Engagement & Strategy Implementation





# Capacity for Leading Change

# Capacity for Leading Change

- Leadership exChange 101 builds the capacity of campus partners to:
  - Lead collaborative change initiatives
  - Center the student experience
  - Drive continuous improvement within their institutions
  - Demonstrate their skills through a Capstone Project leading tests of change and measuring gains in student outcomes.
- Goal to train 120 campus leaders by June 2028
  - Year 1 → 26 completers
  - Year 2 → 33 participants

# Capacity for Leading Change

- Leadership exChange Vision
  - LX 101 Graduates will continue to lead change on their respective campuses.
  - Launch Leadership exChange 201 (for graduates of LX 101)
    - LX201 participants serve as project facilitators, receiving customized training for specific projects and coaching from national experts.
    - Participants provide direct facilitation support for campuses participating in strategy implementation projects.
  - LX 201 will launch in 2026 with the goal to train 10 campus leaders and deploy them to scale strategy implementation projects this year.





# Gains in Student Success

# Gains in Student Success

- Strategy Data Dashboards
  - Transfer – LIVE
  - Gateway Course Success – launch by 3/23
  - Adult Attainment – launch by 3/23
  - Student Basic Needs – launch by 6/30
- Student Voice Research
  - KYSSC partners with campus faculty to lead qualitative student voice research on strategy areas to inform best practices, innovation, and interventions.
- Research Briefs
  - KYSSC partners with CPE data team and campus faculty and graduate students to produce briefs highlighting findings from the Strategy Dashboards.
- Initiative Key Performance Indicators Dashboard
  - KYSSC tracks KPIs for all active initiatives

# Highlights of Student Basic Needs Initiatives



# ➤ Supporting Student Basic Needs

**More than half of all college students  
struggle to have their basic needs met**

*Forcing them to choose between their  
educational goals and paying their bills*



# 60x30 Goal

**Removing financial barriers and investing in basic needs support**  
are essential elements of Kentucky's strategy to achieve the 60x30 Goal



By 2030,  
**60% of KY population**  
will hold a postsecondary  
degree or credential

To reach this goal, we must:

Increase access to basic needs  
supports for college students

Increase access to postsecondary education  
for individual's receiving state supports

# Student Basic Needs

- **Basic Needs Data Dashboard & Research Briefs**
- **kynector Partnership – CHFS & KCTCS**
- **Student Testimonial Campaign** to reduce stigma around accessing basic needs supports
- **Trusted Sources Training** for campus staff and faculty to raise awareness and increase capacity for supporting student basic needs
- **Website Template & Beacon** – AI agent to support identifying basic needs supports
- **Emergency Aid Process Mapping**

# Highlights of Adult Attainment Initiatives



# Adult Learner Strategies Current Focus Areas

- Determined by CPE Strategic Agenda and Moving Up Plan
- Further Refined by the Adult Attainment Guiding Team and Senior Fellows





# Accessibility

- **Parent Student Voice Research** (Eastern Kentucky University, University of Kentucky, University of Louisville)
- **Childcare Landscape Analysis** and Parenting Student Toolkit (Trellis Strategies)
- **System Redesign Grants for Childcare Solutions:**
  - Maysville Community and Technical College
  - Morehead State University
  - Northern Kentucky University
  - Southeast Community and Technical College
  - Southcentral Kentucky Community and Technical College

# Accessibility

- **Adult Learner Journey Mapping**
  - Ashland Community and Technical College
  - Bluegrass Community and Technical College
  - Gateway Community and Technical College
  - Madisonville Community and Technical College
  - Southcentral Kentucky Community and Technical College
- **Higher Ed 101 Professional Learning** – training for community-based professionals assisting adults with postsecondary pathways
- **Come Back Coaching Partnership** with InsideTrack
  - 6000 adults to receive personal college coaching over three years

# Innovation

## Credit for Prior Learning Continuous Improvement Cycle (CCI)

Coaching, Resources, and Technical Assistance provided to improve policy, practice, and Communications/marketing in the process of awarding rigorous college-level learning

*“Having support from CPE and being part of this collaboration was extremely helpful in realizing areas of CPL where we are as an institution where we could grow, and how to best promote.”*

*“Allowing us the autonomy and flexibility to craft a modernization plan that worked for us. Just like CPL isn't one-size-fits-all, neither was CCI, allowing us to make decisions that worked best for the culture of our institution. We guided this in the direction we needed to, with the help and direction of our CCI experts, to fulfill the gaps that we identified to modernize CPL at our campus.”*

*“Our institution changed pretty rapidly and for the better. I could not be more pleased with our efforts and the results. Thanks!”*

*-Comments taken from Cohort 1 Feedback Survey*

# Partnerships



A statewide virtual collaborative bringing together professionals across education, workforce, and community organizations to:

- Identify barriers facing adult learners
- Develop practical, scalable solutions
- Share insights and resources across the adult learner ecosystem

# Additional Partnership Priorities

- Kentucky Adult Education
- Workforce
- InsideTrack (GED to Post Secondary)
- Justice-Impacted SHEEO Community of Practice





# Q&A

Thank you!